

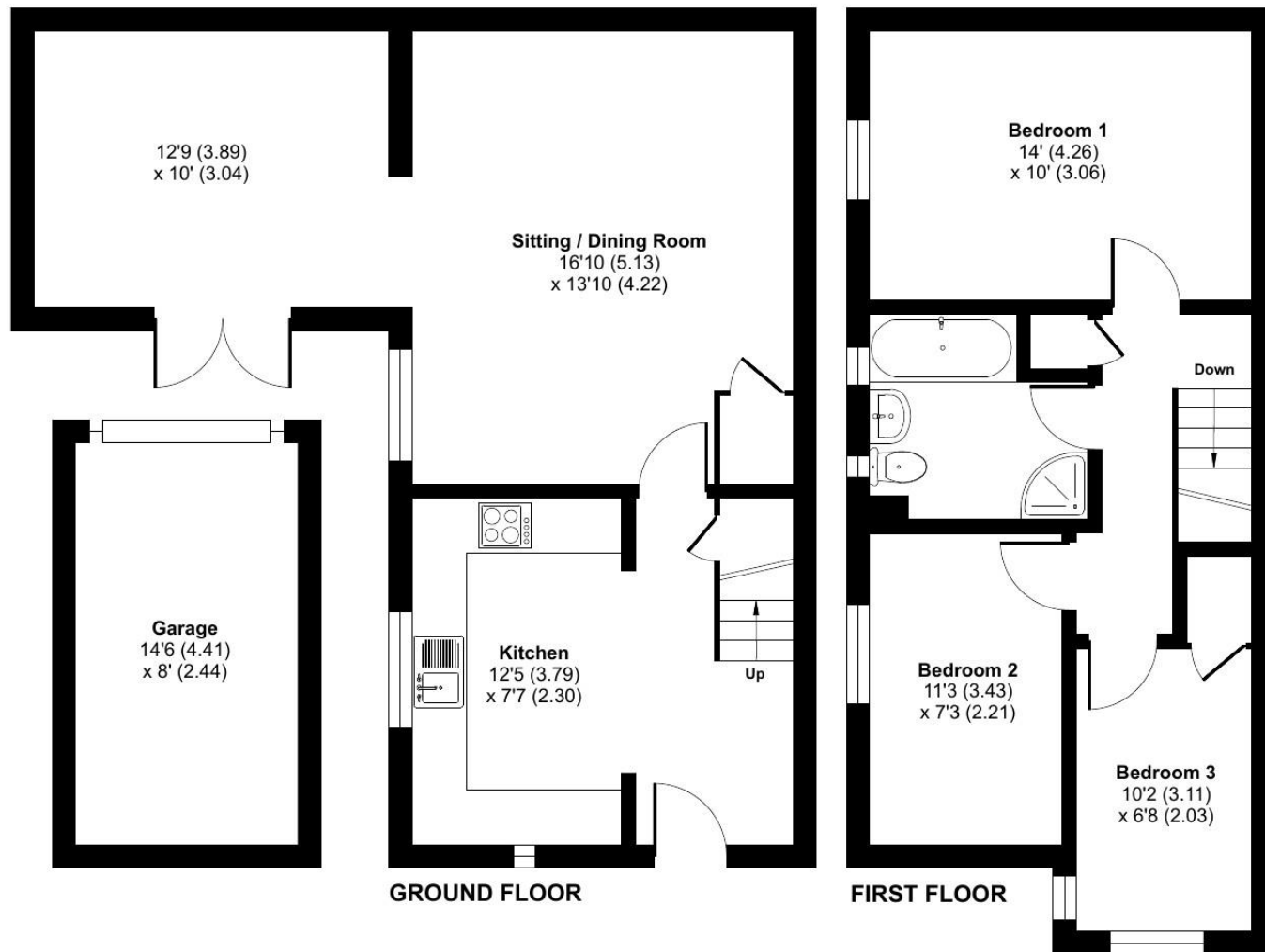
Barn Meads Road, Wellington, TA21

Approximate Area = 958 sq ft / 89 sq m

Garage = 116 sq ft / 10.7 sq m

Total = 1074 sq ft / 99.7 sq m

For identification only - Not to scale



Floor plan produced in accordance with RICS Property Measurement 2nd Edition, Incorporating International Property Measurement Standards (IPMS2 Residential). © n°cheom 2025. Produced for Jeffrey Limited T/A Wilkie May & Tuckwood Wellington. REF: 1230070

155 Barn Meads Road is a three bedroom terraced house situated on a private plot at the end of a cul de sac on the popular South side of Wellington.

The property is accessed via a gate to the front door into the spacious kitchen which benefits from plenty of wall and base units for storage with tiled splashbacks, a stainless steel sink, integrated double oven with a four ring gas hob and extractor above. There is a further space for a fridge/freezer washing machine and additional plumbing for a dishwasher.

The sitting/dining room is light and spacious and leads to an additional reception room benefitting from French doors to the garden.

The first floor offers three bedrooms which are served by the family bathroom with a four piece suite.

Externally, to the front of the property there is a single garage and driveway parking and a gate leads to the fully enclosed garden which is laid to patio and gravel with low maintenance in mind. A lean-to provides additional covered space for storage.



- Three bedrooms
- Semi detached property
- Quiet cul de sac location
- South side of Wellington
- Garage and driveway parking
- South facing garden

